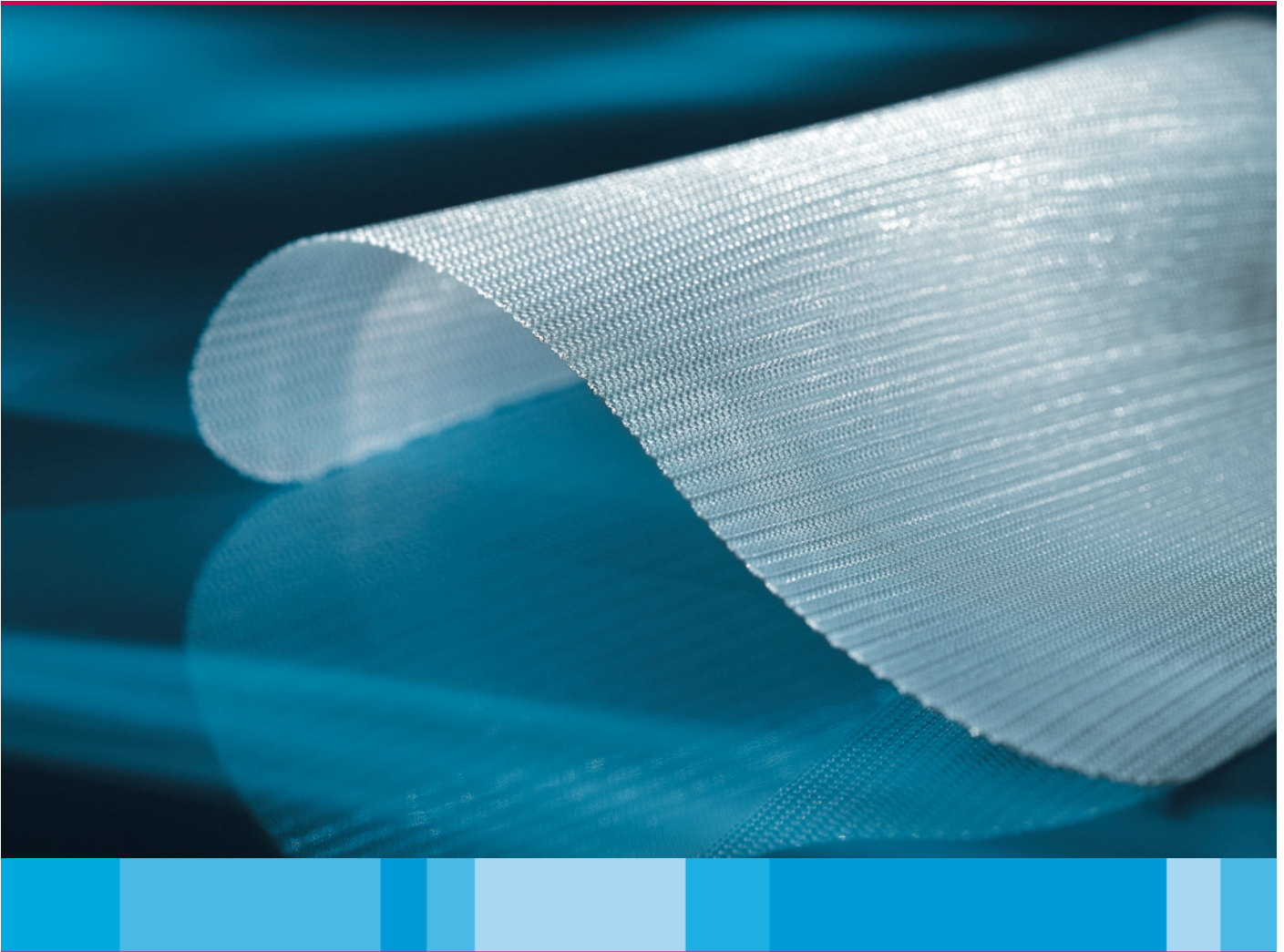


# B. Braun Meshes

## Premilene® Mesh

Mesh for hernia repair and  
reconstruction of the chest wall



Thin with excellent transparency

# Premilene® Mesh

Allows rapid tissue ingrowth

Premilene® Mesh is a mesh for hernia repair and it is also used for reconstruction of the chest wall. It is made from monofilament polypropylene. The monofilaments are knitted into an elastic, resistant, and porous mesh.

Premilene® Mesh is characterized by the extreme dimensional stability of its thin mesh wall. It adapts itself optimally to the latitudinal and longitudinal movements of the patient resulting from body motion.

The technically advanced mesh structure is also retained after cutting and does not fray. The thin structure of Premilene® Mesh means that the mesh is highly transparent so that the tissue underneath is visible during surgery. The mesh is suitable for both conventional operations and minimally invasive techniques.

transparency

## **Rapid healing**

and penetration of tissue, mesh stimulates growth of tissue through the pores

## **Ideal pore size**

for optimal tissue ingrowth

## **Thin, conformable and strong**

for maximum patient comfort

## **For open and laparoscopic**

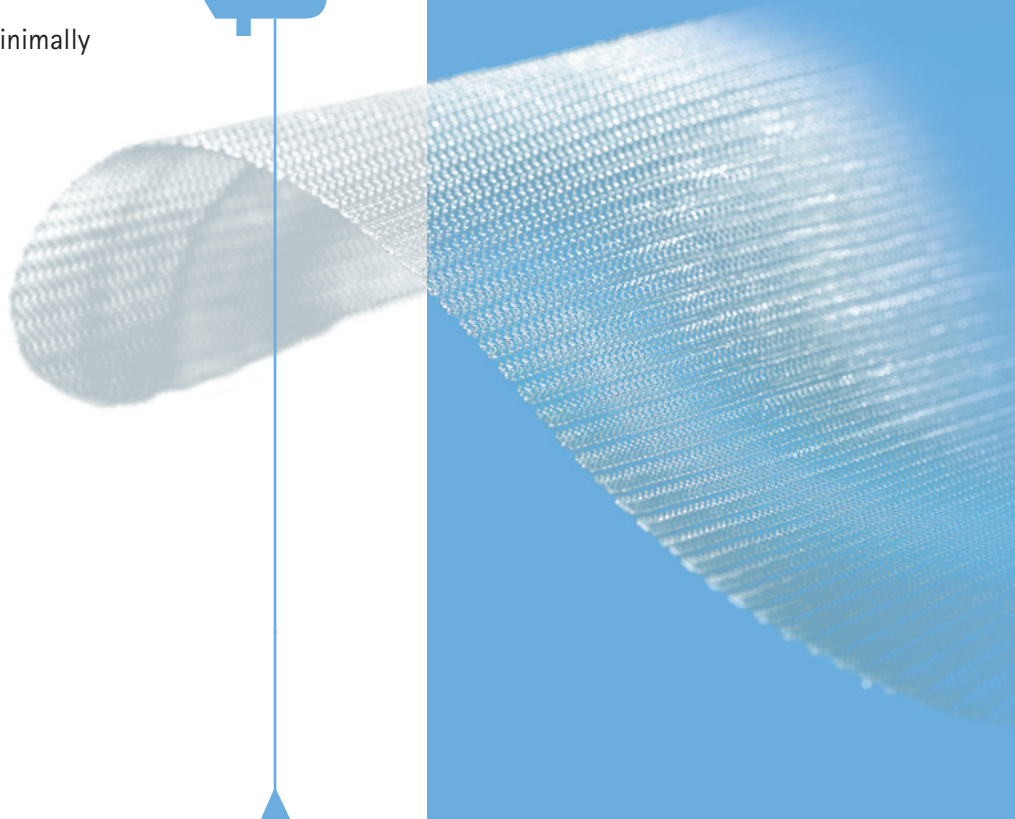
procedures – one mesh suitable for all techniques

## **Excellent transparency**

to see the tissue below

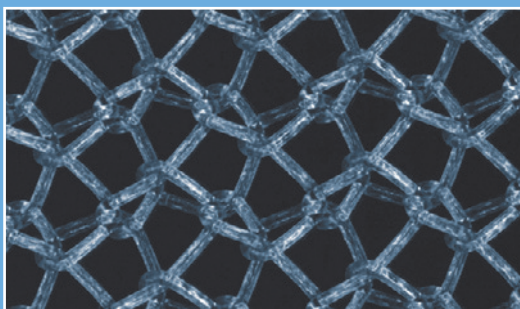
## **Soft, smooth, easy placement**

due to unsurpassed handling characteristics

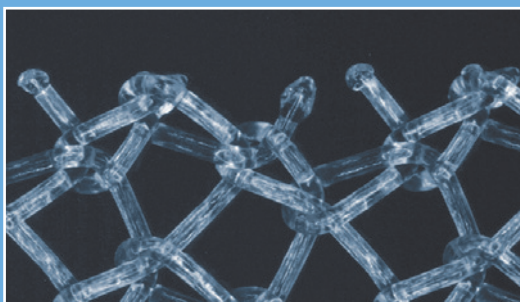


For further information please visit [www.bbraunmeshes.com](http://www.bbraunmeshes.com)

# thin mesh



The use of thin monofilaments and a high-technology knitting process makes it possible to produce a thin mesh which greatly improves the trimming and handling during implantation. The thin mesh is characterized by its high elasticity and its fine polypropylene monofilaments.



A technically advanced laser cutting process avoids sharp edges and fraying of Premilene® Mesh. The ends of the fibres are melted when the mesh is cut into shape.

Product range

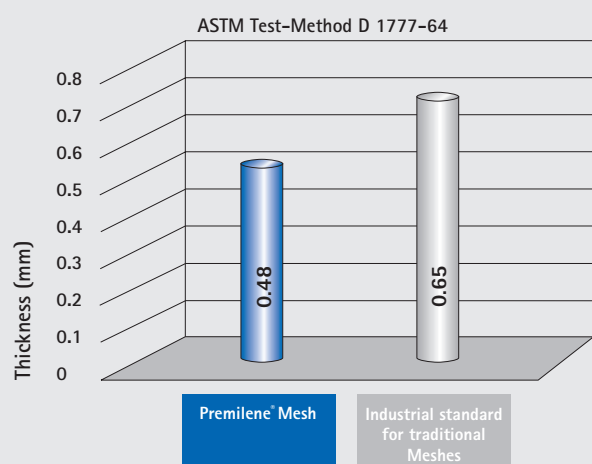
Article No.	Dimensions				Contents
1064305	3	x	10	cm	5 pieces
1064315	5	x	10	cm	5 pieces
1064425	7.5	x	15	cm	5 pieces
1064495	10	x	15	cm	5 pieces
1064445	5	x	30	cm	5 pieces
1064465	26	x	36	cm	5 pieces
1064415	7.5	x	7.5	cm	5 pieces
1064435	15	x	15	cm	5 pieces
1064455	30	x	30	cm	5 pieces
1064325	4.5	x	9.5	cm	5 pieces
1064335	6	x	12.5	cm	5 pieces
1064345	4.5	x	10	cm	5 pieces
1064365	6	x	14	cm	5 pieces
1064385	4.5	x	10	cm	5 pieces
1064375	6	x	14	cm	5 pieces



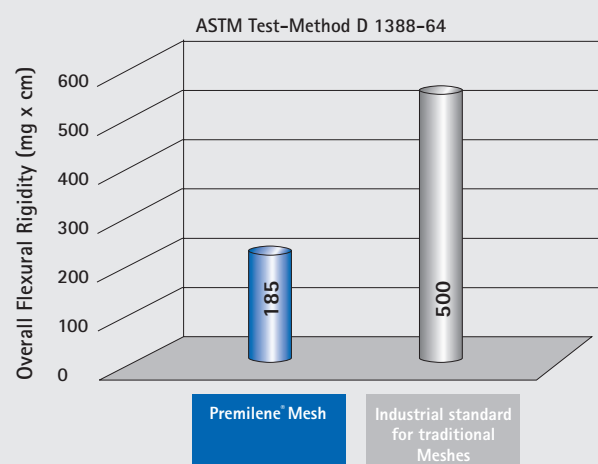
# Premilene® Mesh

Thin, soft, smooth and strong

## Thickness



## Stiffness



## Product features

Material	Monofilament Polypropylene
Construction	Knitted
Weight	82 g/m <sup>2</sup>
Thickness	0.48 mm
Pore size	0.8 mm
Indications	<ul style="list-style-type: none"><li>• Hernia repair</li><li>• Reconstruction of chest wall</li><li>• Re-inforcement of fascial tissue if a non-absorbable re-inforcement material is required</li></ul>
Contraindications	Premilene® Mesh should not be implanted in contaminated and infected areas as well as in children during the growth phase
Sterilisation	Ethylene oxide



AESCULAP®

**B | BRAUN**  
SHARING EXPERTISE

**Aesculap AG & Co. KG**

Am Aesculap-Platz  
78532 Tuttlingen  
Germany

Phone +49 7461 95-0  
Fax +49 7461 95-2600

[www.aesculap.de](http://www.aesculap.de)

All rights reserved. Technical alterations are possible. This leaflet may be used for no other purposes than offering, buying and selling of our products. No part may be copied or reproduced in any form. In the case of misuse we retain the rights to recall our catalogues and pricelists and to take legal actions.