

NEUROSURGERY

AESCULAP[®] Neuro-Patch[®]

SYNTHETIC DURA SUBSTITUTION

AESCULAP® Neuro-Patch®

INDICATIONS

Dura substitute in intracranial and intraspinal procedures

CONTRAINDICATIONS

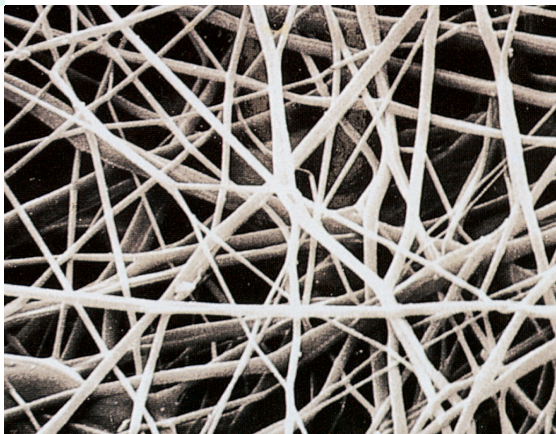
Neuro-Patch® should not be used:

- In open cranial trauma
- In open spina bifida
- In infected areas

PRODUCT CHARACTERISTICS¹

- High liquid tightness of the implant prevents CSF leakages
- Tissue tolerant
- High tensile strength of the implant prevents suture pull out
- Good suturability
- Adaptable to anatomical structures

¹ Data on file, Aesculap AG.



DESCRIPTION

Neuro-Patch® is a type of fine fibred microporous fleece manufactured from a highly purified polyesterurethane.

The fine fibred microstructure supports the rapid infiltration of connective tissue cells.

Sizes	Content	Art. No.
12 x 14 cm	1 piece	106 4002
6 x 14 cm	1 piece	106 4010
8 x 9 cm	1 piece	106 4020
6 x 8 cm	1 piece	106 4029
5 x 6 cm	1 piece	106 4040
4 x 10 cm	1 piece	106 4037
4 x 5 cm	2 pieces	106 4045
2 x 10 cm	2 pieces	106 4053
1.5 x 3 cm	2 pieces	106 4061

AESCULAP® – a B. Braun brand

Aesculap AG | Am Aesculap-Platz | 78532 Tuttlingen | Germany
 Phone +49 7461 95-0 | Fax +49 7461 95-2600 | www.aesculap.com

The main product trademark "Aesculap" and the product trademark "Neuro-Patch" are registered trademarks of Aesculap AG.

Subject to technical changes. All rights reserved. This brochure may only be used for the exclusive purpose of obtaining information about our products. Reproduction in any form partial or otherwise is not permitted.