

AESCULAP Aicon® STERILE CONTAINER

FUNCTIONAL TEST

Check all components of the sterile container visually for damage and correct function before every use. To ensure a correct function, instructions for use TA015495-EN must be followed under all circumstances. If the most recent edition of the instructions for use is not available to you, please contact AESCULAP®.

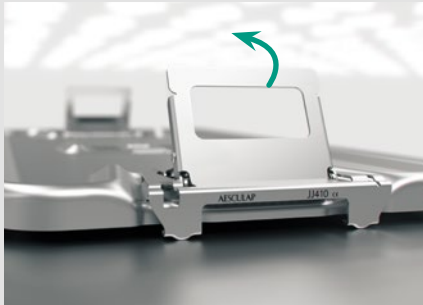
1. CHECK THE LID



Check for dents and deformations.

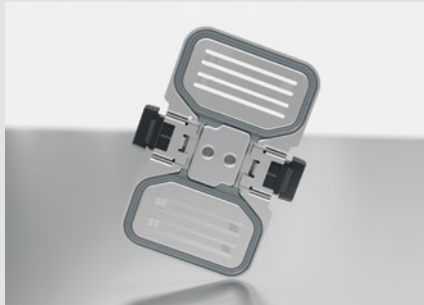


Check gasket (intact).



Locking mechanism fully functional.

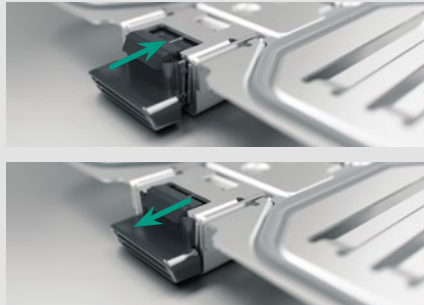
2. CHECK FILTER RETAINER



Check for dents and deformations.



Check gasket (intact).



Filter retainer push button fully functional.

3. CHECK THE BOTTOM



Insert new filter (no kinks, holes, cracks).



Filter retainer snaps audibly into position and has full surface contact.



Check for dents and deformations.

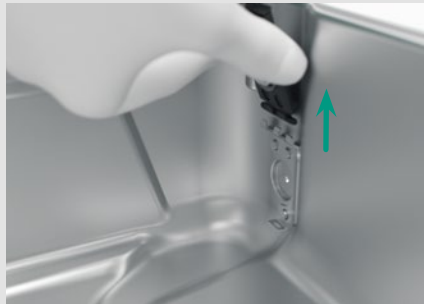


Check container rim for dents and deformations.

4. INSPECT EDS SYSTEM



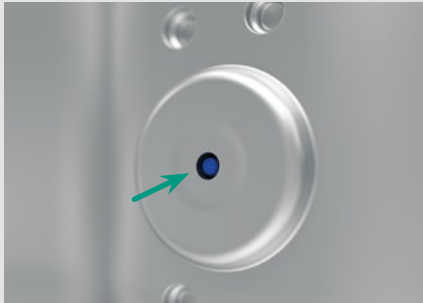
Remove condensate outlet for inspection.



Condensate outlet undamaged. Gaskets (housing and bellows) intact.



Place condensate outlet back in position (snaps into place).



The blue dot indicates from the outside that the condensate outlet is in place.

5. STERILE CONTAINER READY TO USE



Close and seal the container. Only use undamaged sterile containers. If components are damaged, replace with original parts or repair immediately.



Sterile container ready to use.

ALSO AVAILABLE AS VIDEO CLIP



How to do the functional test? Scan the code and jump to a short video clip.