

Surecan[®] Safety II

Power-injectable safety non-coring needles for Access Ports



Access Ports Systems

DEHP
FREE

LATEX
FREE

Surecan® Safety II needles for Access Ports

- Surecan® Safety II is a non-coring safety needle designed by nurses for nurses. "Health and safety of workers is paramount and is closely linked to the health of patients."*
- The small size and unique design of Surecan® Safety II ensures comfort for both clinicians and patients, either in hospital or for home care treatment.
- Surecan® Safety II is indicated for up to seven days** for infusion of chemotherapy, antibiotic therapy, transfusion and blood sampling and parenteral nutrition (TPN).
- The power injectable Surecan® Safety II may also be used for injection of contrast media when CT scans are performed.
- **Extensive choice of references**
 - 19G to 22G – clinical and patients needs are answered
 - 15 mm to 38 mm – different lengths adapted to different patient's anatomy
- **Choice of three different designs available** which increases safety.



Very low profile, ergonomic wings

- easy to insert and remove
- no change to existing techniques
- designed to provide secure handling during puncture and removal
- intuitive deployment
- patient-friendly, permits small and comfortable dressing
- needle gauge indicated on wings



High density closed-cell pad

- reduces risk of infection as fluids are not absorbed into the pad
- increases patient's comfort when in contact with the skin
- closed cell design avoids bacterial exchange and compression
- low profile (1.5 mm) reduces risk of needle movement



Base

- transparent base for easier visualisation of the insertion point and detection of a suspected infection
- holes to aid skin aeration to reduce risk of maceration which reduces infection risk



Needles

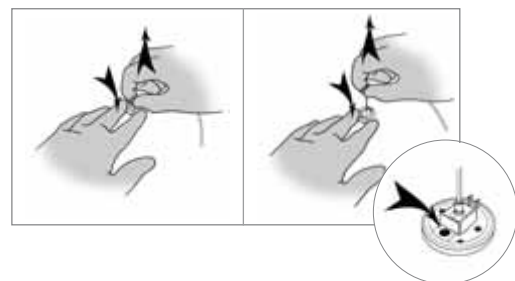
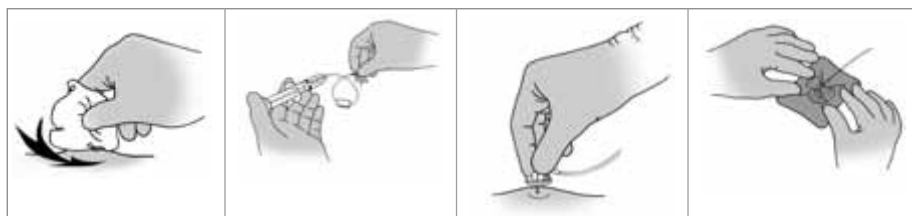
- non-coring bevel maximises septum life
- **non-siliconised** cannula to improve needle retention in septum and avoid spontaneous movement of the needle out of the port

Extension Tube

- DEHP-free transparent and anti-kink tubing
- Power injectable

* European Council Directive 2010/32/EU of 10 May 2010

** Technical Bulletin on request



Surecan® Safety II needles are

- **MR Conditional** – can be used during MRI scanning**
- **DEHP/latex free** – suitable for many medications
- **Power injectable**



HIGH SECURITY at all times ...



Needle and wings clip to base

- which reduces the risk of premature separation of the needle from the base and accidental deployment
- when unclipped pulsed, rotative flushing can easily be achieved



Green point confirms correct deployment of the safety mechanism

- for easy confirmation of deployment



Clamp to interrupt infusion at any time

- easy handling
- colour coded to identify the gauge of the needle
- containing Maximum psi information for fast and easy identification for High Pressure Injection (HP)



Ultrasite® needle free connector with positive pressure valve

- offers additional security even during the use of the needle
- reduced risk of needle stick when using the Y site
- reduces the risk of blood reflux during syringe removal
- reduced risk of blood contact
- maximum pressure indicated on valve



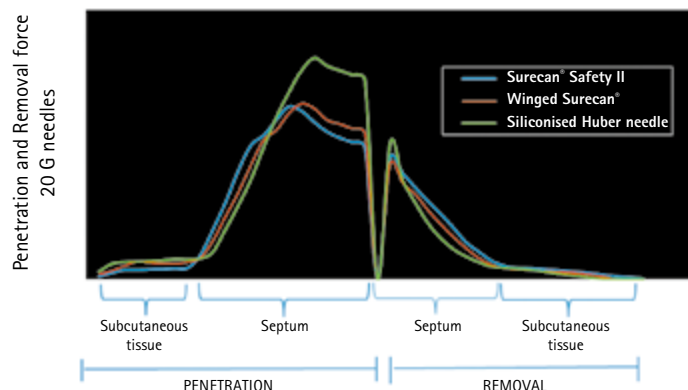
Unique crimping on the needle

- ensures non-reversible deployment
- aids needle retention in the septum during power injection



Note:

Easy to dispose in a medical sharps collector (eg B.Braun Medibox 0.6L)






- The force to insert the needle is similar to that of siliconised needle
- The retaining force of the needle ensures that
 - the needle does not spontaneously exit the port under the dressing
 - the risk of accidental sub-cutaneous extravasation of drugs is reduced
 - the medication flows correctly



The special bevel

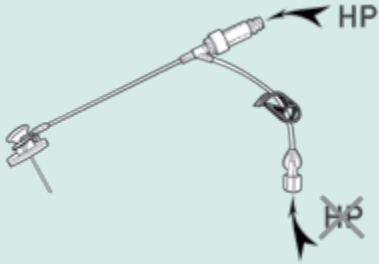
- reduces the coring of the septum
- reduces the risks associated with septum coring such as port leakage or blockage
- reduces the risks of small particles of septum entering the patient
- maximises port life

Reference	Dead volume (mL) max
Surecan® Safety II 19G	0.30
Surecan® Safety II 20G	0.25
Surecan® Safety II 22G	0.20
Surecan® Safety II with Ultrasite® 19G	0.60
Surecan® Safety II with Ultrasite® 20G	0.50
Surecan® Safety II with Ultrasite® 22G	0.40
Surecan® Safety II with Ultrasite® Y 19G	0.65
Surecan® Safety II with Ultrasite® Y 20G	0.60
Surecan® Safety II with Ultrasite® Y 22G	0.50

Available in boxes of 20 units	Needle Size	Colour Code	Cannula length					Tubing length	
			15 mm	20 mm	25 mm	32 mm	38 mm	Needle to Connector	
Surecan® Safety II 	19G		04447000	04447001	04447002	04447003	04447004	190 +/- 10 mm	
	20G		04447005	04447006	04447007	04447008	04447009		
	22G		04447010	04447011	04447012	04447013	-		
Surecan® Safety II with Ultrasite® 	19G		04447014	04447015	04447016	04447017	04447018	190 +/- 10 mm	
	20G		04447019	04447020	04447021	04447022	04447023		
	22G		04447024	04447025	04447026	04447027	-		
Available in boxes of 20 units	Needle Size	Colour Code	15 mm	20 mm	25 mm	32 mm	38 mm	Needle to Y-Site	Y-Site to connector
Surecan® Safety II with Ultrasite® Y 	19G		04447028	04447029	04447030	04447031	04447032	90 +/- 10 mm	82 +/- 10 mm
	20G		04447033	04447034	04447035	04447036	-		
	22G		04447038	04447039	04447040	-	-		

Guidelines for using Surecan® Safety II needles for CECT

All Surecan® Safety II needle configurations are power injectable**



Attention: for high pressure injection of the Surecan® Safety II with Y-site

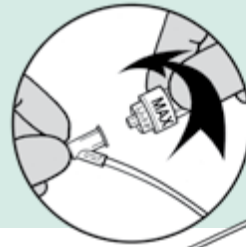
- always ensure the Ultrasite® valve is firmly attached
- always close the clamp on the main line
- then inject through the Ultrasite® valve



Always ensure that the Ultrasite® needle-free connector is applied and tightened before use



Surecan® Safety II with Ultrasite®



Surecan® Safety II with Ultrasite® Y

Surecan® Safety II needles may be used for Contrast Enhanced Computerised Tomography (CECT) using power injection

Warning for high flow rate/power injection:

- Always verify that the access port implanted is power injectable.
- Always verify that the port and catheter are functional by aspirating 2mL of blood into a syringe and injecting 5mL of sodium chloride (NaCl) 0.9% into the port/catheter before attempting to start an infusion of medication.
- Do not exceed the recommended pressure (325psi – 22.4 bars) and access port maximum flow rate recommended by the manufacturer as device failure may occur.
- Do not exceed the maximum pressure indicated on the needle (325psi).
- Contrast media should be warmed to 37°C (98.6°F) before use. Failure to do so will result in up to 50% lower flow rates and/or device failure.
- Depending on the technical characteristics of the injector system, the target flow rate might not be attained.
- Ensure that the needle is correctly placed in the port, securely taped to the skin and covered with an adhesive dressing before starting high pressure injection.
- Vigorously flush the Surecan® Safety II needle using a 10 ml or larger syringe and sterile sodium chloride (NaCl) 0.9% prior to and immediately following the completion of power injection studies.
- The Surecan® Safety II indication for power injection of contrast media implies the ability of the system to withstand the procedure, but does not imply appropriateness of the procedure for a particular patient. A suitably trained clinician is responsible for evaluating the health status of a patient as it pertains to a power injection procedure.

** Technical Bulletin on request

