

AESCULAP Aicon®

Features and Benefits

April 2024





AESCULAP Aicon®

A jump ahead in Sterile Supply Management

AESCULAP Aicon® Sterile Container System size 1/1

Container bottoms¹		Container bottoms¹ with two EDS, each (EDS = Enhanced drying system)	
Item no.		Item no.	
JJ110		JJ111	
JJ120		JJ121	
JJ130		JJ131	
JJ140		JJ141	
Lids¹ for Container bottoms with and without EDS, incl. JJ600		Replacement EDS module (EDS = Enhanced drying system)	
Item no.		Item no.	
JJ410		JJ600	

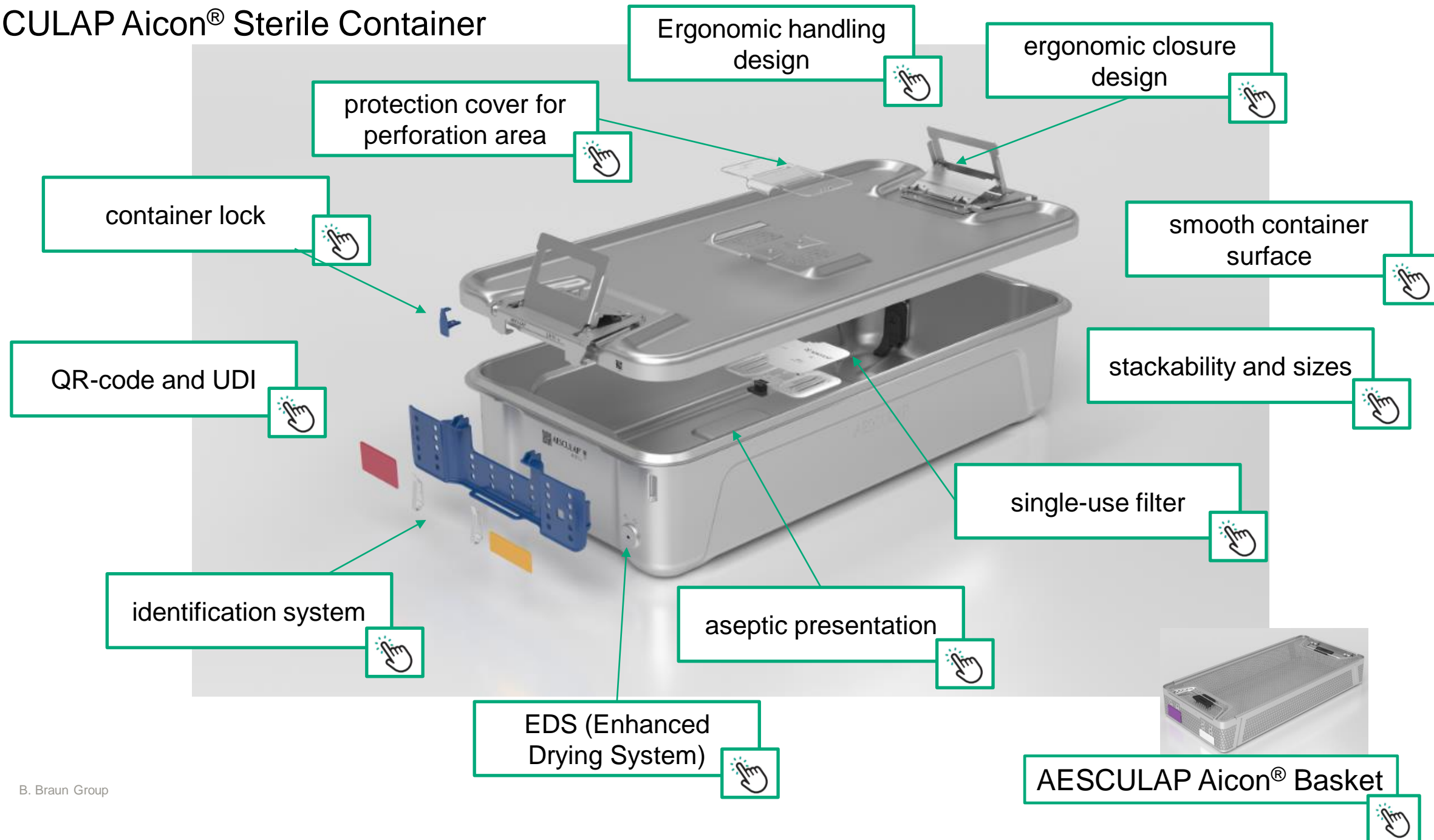
AESCULAP Aicon® Baskets sizes 1/1 and DIN

Basket combination options	
Item no. container bottom	Item no. baskets Size 1/1 or DIN
JJ110 / JJ111	JJ162R / JJ462R
JJ120 / JJ121	JJ164R / JJ464R, JJ161R / JJ461R, JJ162R / JJ462R, JJ163R / JJ463R, JJ161R / JJ461R, JJ162R / JJ462R, JJ163R / JJ463R
JJ130 / JJ131	JJ162R / JJ462R, JJ163R / JJ463R, JJ164R / JJ464R, JJ163R / JJ463R
JJ140 / JJ141	JJ164R / JJ464R, JJ164R / JJ464R
Baskets¹ size 1/1	
Item no.	Art.No.
JJ161R	JJ461R
JJ162R	JJ462R
JJ163R	JJ463R
JJ164R	JJ464R
JJ167R	JJ467R
1/1 Aesculap Aicon® basket 1/1 Aesculap Aicon® basket lid	
Baskets¹ Size DIN	
Item no.	Art.No.
JJ161R	JJ461R
JJ162R	JJ462R
JJ163R	JJ463R
JJ164R	JJ464R
JJ167R	JJ467R
DIN Aesculap Aicon® basket DIN Aesculap Aicon® basket lid	

Note: Pursuant to DIN ISO 800-4, the load must not exceed a total of 10 kg in order to avoid excessive condensate formation. Aesculap Aicon® baskets are made of stainless steel 1.4301 and medical silicone USP Class II (Baf-tested).

A jump ahead in sterile goods management

AESCULAP Aicon® Sterile Container



AESCULAP Aicon® Instrument Basket

Wavelike basket
bottom

Lid

Stacking

Smooth design

Synchronized with
AESCULAP Aicon® container

Ergonomic handles

AESCULAP Aicon® Sterile Container



Protection cover for perforation area

! Can remain in place during cleaning and sterilization



- It is an additional dust protection of the perforation area
- It is made of thermostable plastic material (PPSU)
- It is optional
- Has been tested for hundreds of reprocessing cycles followed by several thousands' assembly/disassembly cycles successfully – please refer to the test summary “stability/endurance testing”

BACK



Container lock

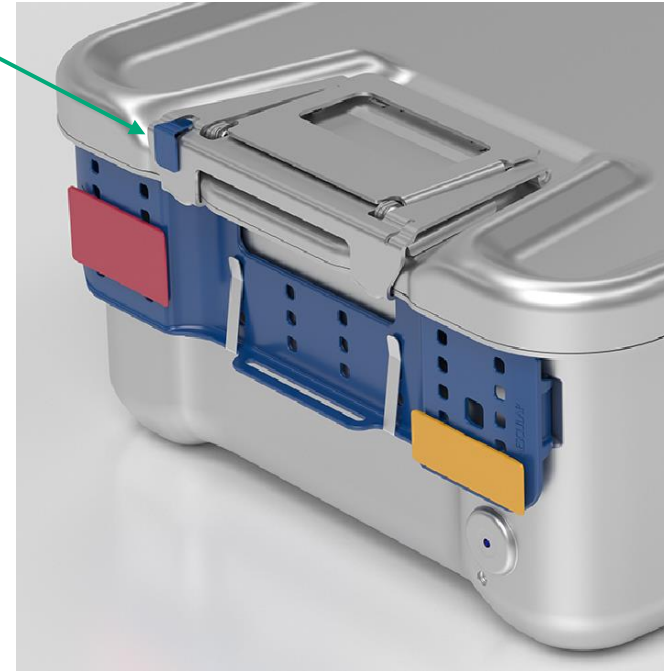
! New patented design



Without
indicator



With indicator for
steam sterilization



- For tamperproof closing
- It does not protrude
- It can be checked from above (e. g. in the OR) and from the front (e. g. in storage)
- It is destroyed when opening the container, but it stays in position (small parts do not fall out)

BACK



Identification System

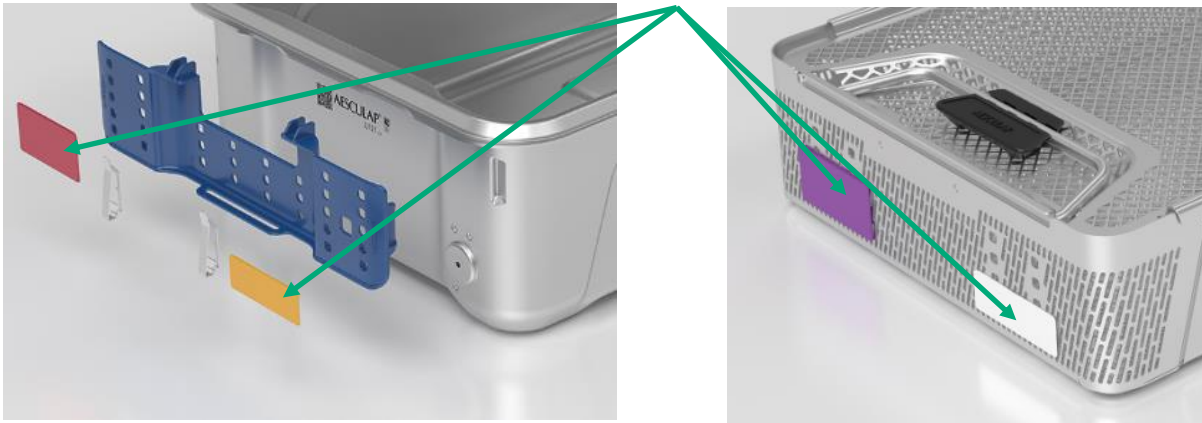
! Allows a generic use of the container

- The AESCULAP Aicon® container is used with faceplates and tags, which are both available in 10 different colors. The tags are available in 2 sizes and can be labeled individually. [More](#)



Faceplates and tags

! Same system for container and basket

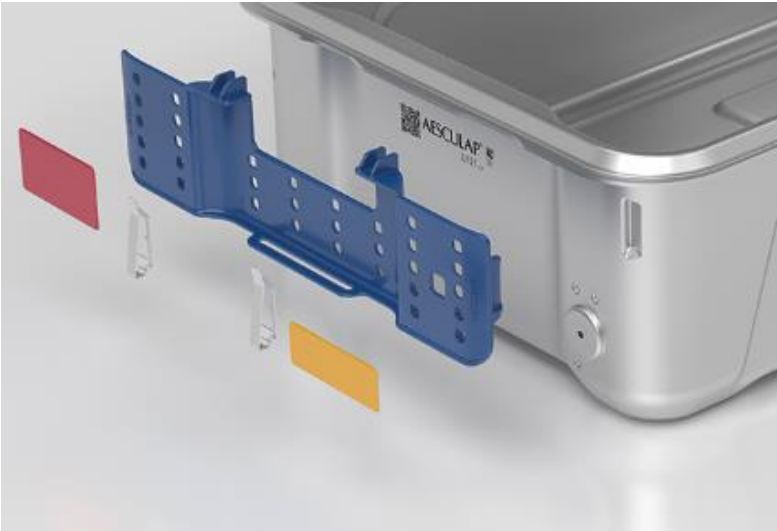


- Easy to use “click on/click off” system
- Once the container is closed, the faceplate is reliably fixed and cannot be removed
- Clamps may be used to affix larger documents
- Made of thermostable PPSU
- Has been tested for hundreds of reprocessing cycles followed by several thousands' assembly/disassembly cycles successfully – please refer to the test summary “stability/endurance testing”
- Can remain in place during cleaning and sterilization
- Can be used for color-coding and identification of set content
- Allows a generic use of the container. [More](#)



Faceplates and tags

! Allows a generic use of the container



The removable faceplate allows to use any suitable container in the appropriate size. At the decontamination area, the faceplate is removed from the container and placed onto the instruments in the basket. It is reprocessed together with the instrument sets while the container is reprocessed in its designated process. At the packaging table, the faceplate is clicked on any suitable container – ready. Also refer to the corresponding simple show “AESCULAP Aicon® identification system”.

Ergonomic* handling design

! Quiet operation of containers in the CSSD

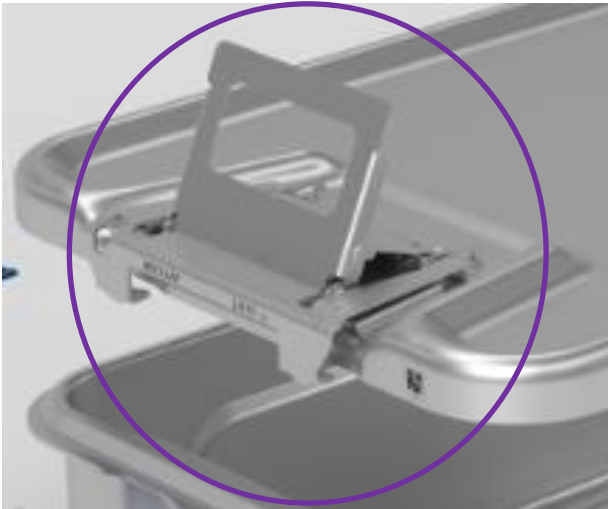


- Significantly lower noise as previous generation
- Better control
- Use of palm and thumbs for better guidance
- Easy accessibility of rear handle



Ergonomic* closure design

! The lid can be hold as a shield so that there is no risk of contaminating the sterile field



- Executed as a toggle lever that tightly and homogenously closes the container
- The closing mechanism should be on the “close” position when placed on the table
- That is also the position in which the lid is cleaned and disinfected
- Lower muscular strain needed for opening and closing as with previous generation*

BACK



Single-use filter

! Only one perforation area, regardless of the container size



Without indicator



With indicator for steam sterilization

- Only one filter = less costs, less handling efforts
- Single-use filter available with and without indicator for steam sterilization
- Indicator change visible from the outside



Reusable filter
JJ615
(1000 cycles)



Aseptic presentation

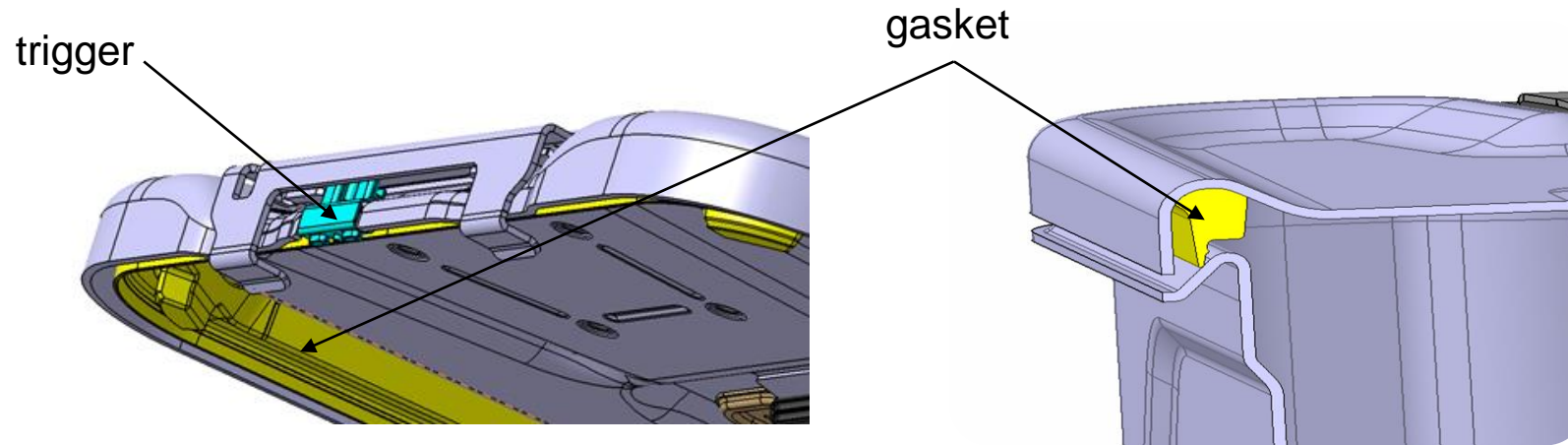
! The new gasket design ensures that the upper edge of the container bottom is sterile



- Container rim is sterile, that facilitates aseptic presentation in the OR
- New gasket design. [More](#)

Aseptic presentation

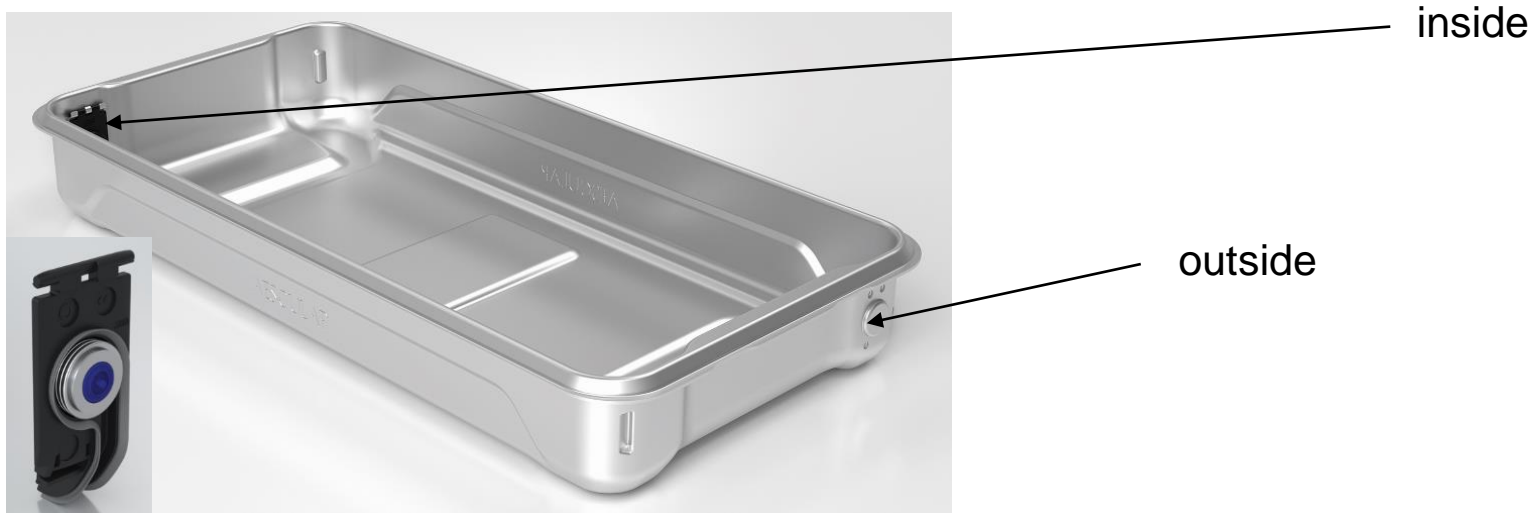
! The lid is equipped with a trigger



- New gasket is much wider as in comparison to previous generation
- It is made of robust silicone
- Since the gasket is sucked onto the bottom due to the pressure differences, the lid is equipped with a trigger in order to open the container with little physical effort

EDS (Enhanced Drying System)

! Always allows good drying results

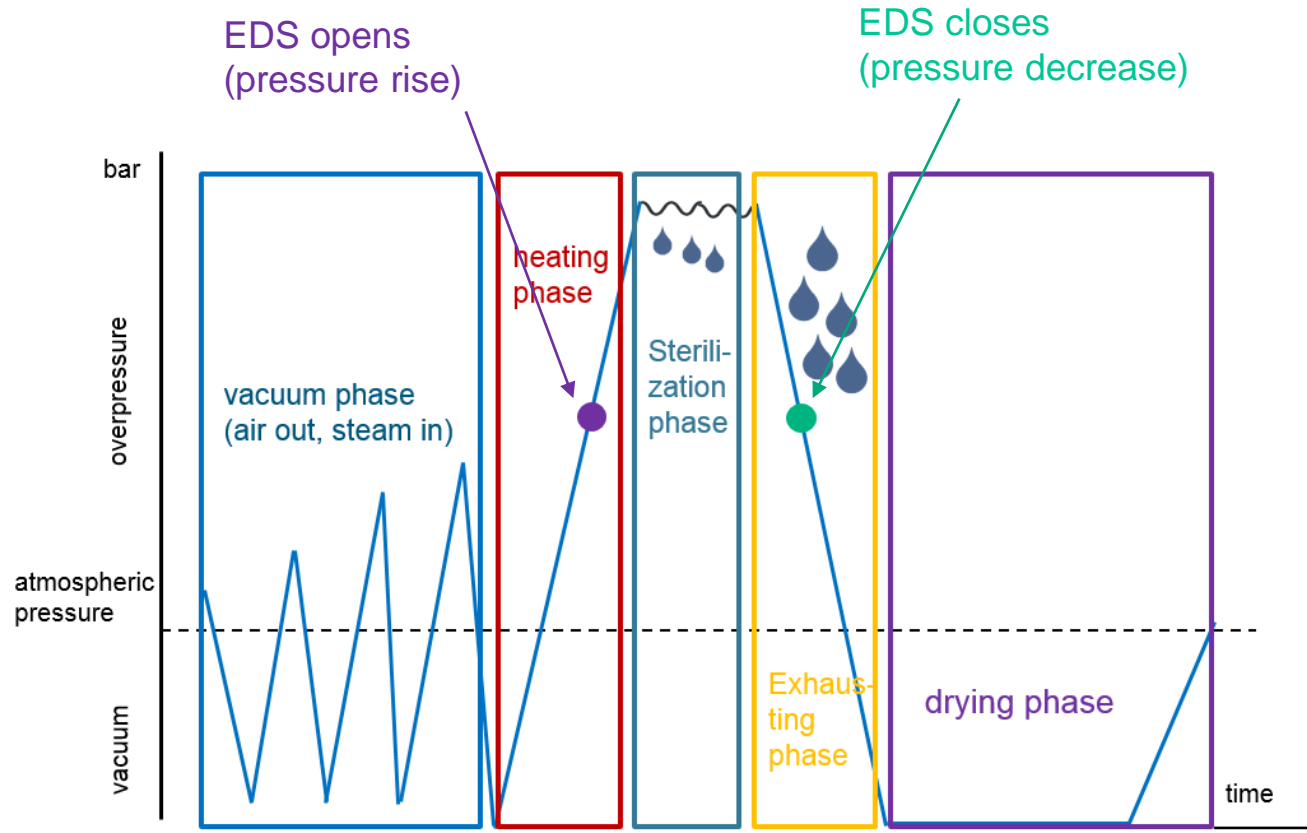


- Two EDS modules per container bottom, on the diagonally opposite sides (to make sure that it works also on uneven sterilization carts), on the lowest point
- It is always closed under atmospheric pressure
- Blue dot to check from the outside if EDS is in place
- Can remain in place for cleaning and disinfection
- Container bottom is designed in a way that the water is collected at the lowest point
- How does it work? [More](#)

BACK



EDS (Enhanced Drying System)



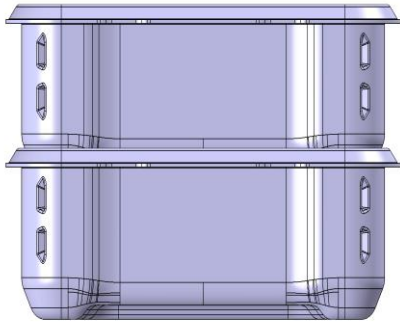
Steam coats the instruments, heats them and sterilization takes place. Steam becomes water = condensate. EDS actively blows the condensate out due to the pressure difference between the inside of the container and the sterilization chamber. Even before the drying phase begins, the container is almost dry.

Also refer to the simple show “What does EDS mean?”



Stackability and sizes

! Not compatible with any previous generation



- Empty container bottoms are safely and space-saving stackable into each other
- Available in full size, half size and three-quarter size
- In 4 heights: 100, 150, 200, 250 mm (total height bottom plus lid)



Smooth container surface

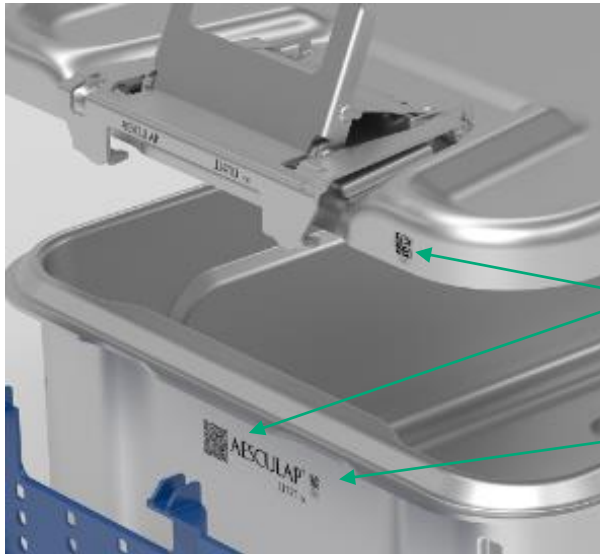
! Nor screws or rivets



- All parts are clinched (pressfit technology) without any screws or rivets = no holes

QR-code and UDI

- ! QR- code provides further product information
- ! UDI allows single tracking



QR- code: only on the container bottom

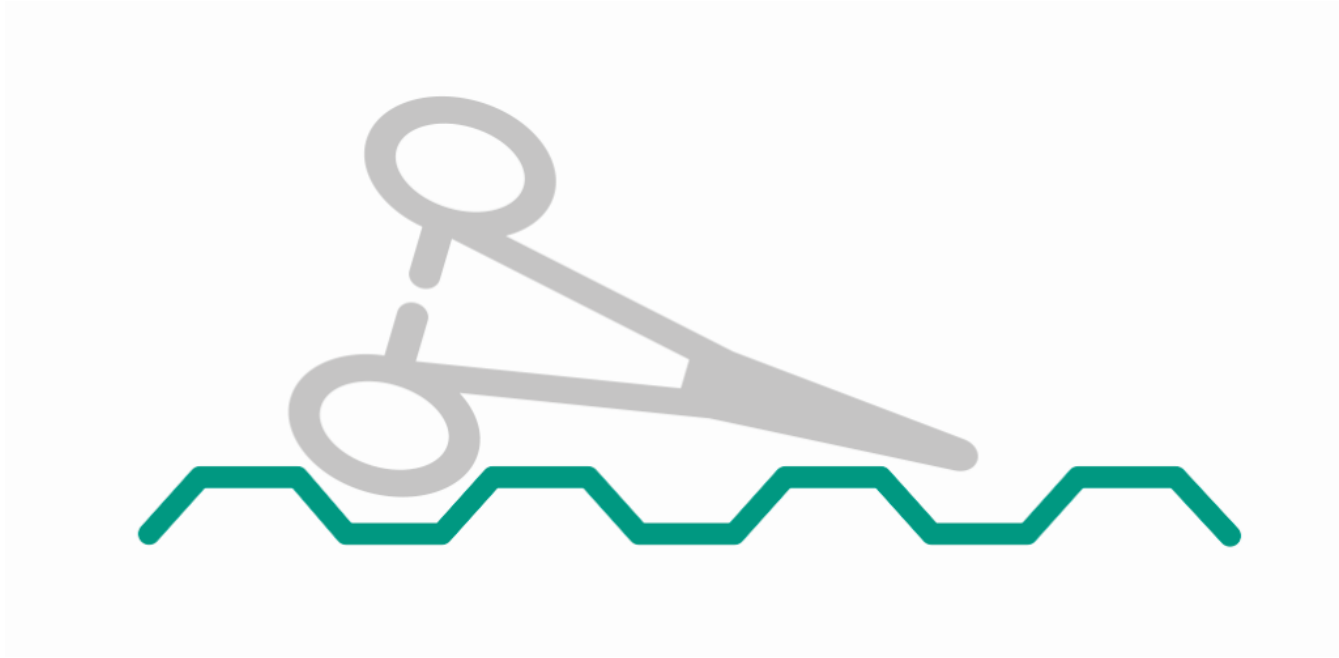
UDI-code: on bottom and lid

- Further product information (e. g. short handling videos) is provided by simply scanning the QR code with a mobile device camera
- UDI (**U**nique **D**evice **I**dentification) code is a regulatory requirement and allows single tracking



Wavelike basket bottom

! Instruments stay upright during packaging process



- Especially ring instruments stay upright during the packaging process. That makes the process much more comfortable.



Ergonomic* basket handles

! Exactly right



- The gripping and holding conditions of the basket are very good, the dimensions are rated by users and experts as exactly right.

BACK



Smooth design

! Also suitable for wrap customers



- Smooth and rounded design, no feet

BACK 

Lid

! Optional

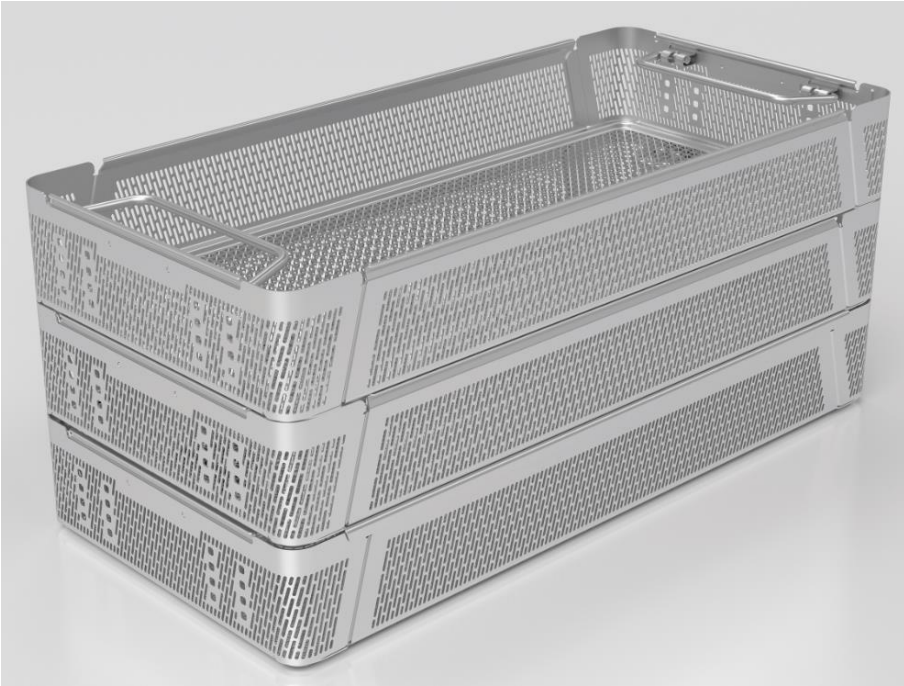


- If a lid is used, the weight is still always carried by the handles of the basket
- Closure system made of silicone, easy to inspect and exchange

BACK 

Stacking

! With or without lid



- Solid and space-saving stacking without having to use feet

Synchronized

! Perfect match



- Same identification tags
- Heights matched with container bottoms – standardized cycle and maximum use of space

